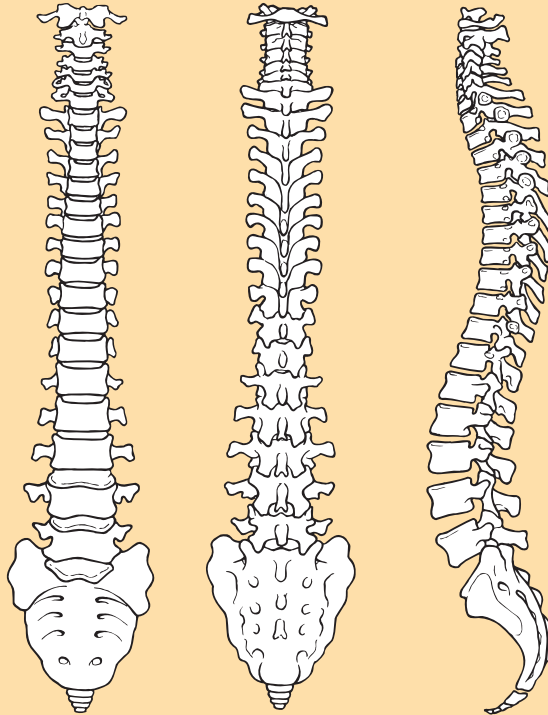




B A S S

British Association of Spine Surgeons

Anterior Lumbar Interbody Fusion Procedure



Issue 1: October 2021

Review date: September 2024

Surgical techniques included in this booklet

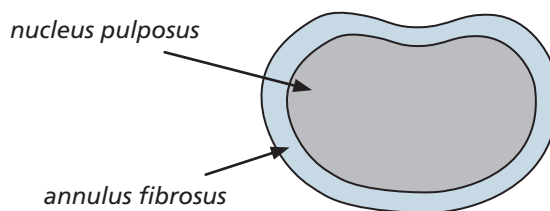
Technique	Page
<input type="checkbox"/> Interbody fusion	4
<input type="checkbox"/> Bone graft	5
<input type="checkbox"/> ALIF	7

Following your investigations and consultation with your spinal surgeon, the possibility of you undergoing a **lumbar spinal interbody fusion** has been discussed with you. This is an operation where a degenerative intervertebral disc is removed and the space fused (joined) together with a bone graft.

There are five bones (vertebra) in the lumbar spine (lower back). In between each bone is an intervertebral disc. The healthy intervertebral disc acts as both a spacer and a shock absorber and is composed of two parts: a soft gel-like middle (nucleus pulposus) surrounded by a tougher fibrous wall (annulus fibrosus).

The normal spinal column has a central canal (or passage) through which the spinal nerves pass down. At each vertebral level, spinal nerve roots branch out to each side. The solid spinal cord stops at the top of the lumbar spine (lower back) and from this point the nerves to the bottom and legs pass like a horse's tail (the cauda equina) through the lower canal. The spinal cord, nerve roots and cauda equina are surrounded by cerebrospinal fluid (CSF) and are all contained within a membrane, or covering, called the dura mater, rather like the thin layer that covers a boiled egg,

Overhead view of an intervertebral disc (simplified)



The decision to have a lumbar interbody spinal fusion operation is a very personal one. Patients need to carefully consider the risks and possible complications along with the potential benefits of surgery, as well as consider the full range of alternatives to interbody fusion surgery.

The aim of fusion surgery is to stabilize the painful motion segment and to stop movement at it. The expectation is not to 'cure' the spinal problem but to provide a good percentage improvement and relief of most of the symptoms. This is not necessarily felt immediately but over a period of time (often several months).

The operation – interbody fusion

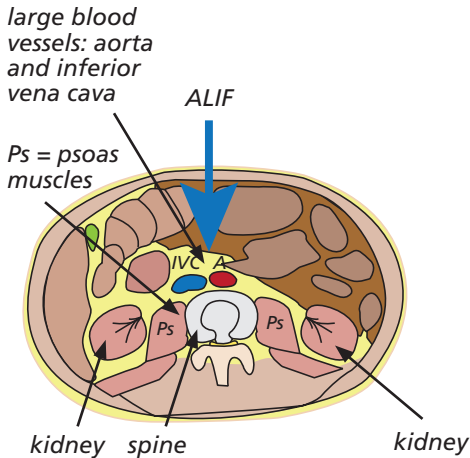
An interbody fusion operation is where the degenerative intervertebral disc is removed and the space is fused (joined) together using bone graft and a combination of other surgical techniques.

Technically, there is a wide variety of surgical procedures that can be performed to fuse the spine, including different cages or spacers (hollow bricks) to insert into the disc space with a bone graft. The approach (way in) to the spine can also vary but in this case will be from the front, through the tummy by **anterior lumbar interbody fusion (ALIF)**.

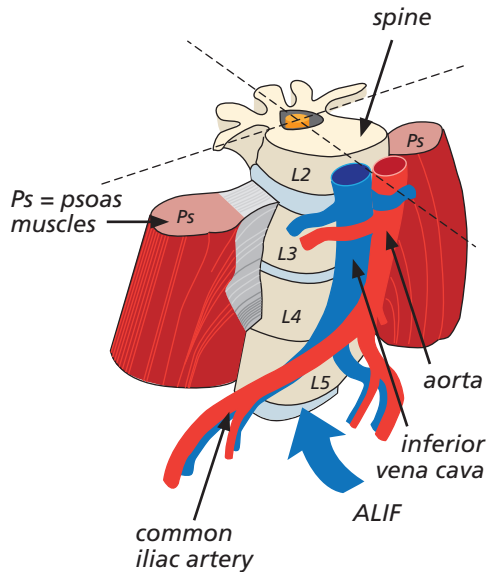
Overhead view

Front/Side view

Front



Back

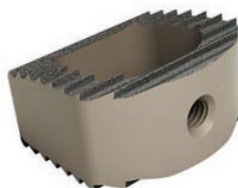


Stabilisation techniques

- 1 Bone graft.** This is used to fuse (join) the bones of the spine together in conjunction with other techniques which hold the spine stable while new bone is growing. When it is placed in the spine your new bone will, over time, grow into the bone graft. This is a biological process over 6 -12 months, known as spinal fusion. There are several techniques to get bone graft needed for spinal fusion:
 - **patient's own bone (autograft bone).** This is usually taken through an incision over the iliac crest (pelvis) but, for the most part, **artificial (synthetic) bone** is used;
 - **artificial bone (synthetic bone).** These are bony like substances;
 - **donor bone (allograft bone).** Donor bone graft does not contain living bone cells but acts as calcium scaffolding which your own bone grows into and eventually replaces.

2 Intervertebral fusion cages. This is like a hollow Lego brick which props up the disc space between the two bones (vertebra). It is a tight fit and gives immediate stability. The cage is available in different width, height and depths to fit your spine exactly. It is made from carbon fibre, PEEK (reinforced plastic) or titanium metal. They can be filled with bone graft or artificial bone if required and used in interbody fusion surgery.

Example of a fusion cage



In certain cases, it is necessary to fix the cage with screws into the bone above and below (used in ALIF surgery).



The surgical approach

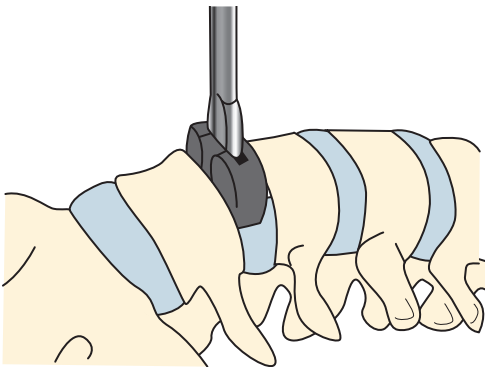
1 Anterior lumbar interbody fusion (ALIF)

This is performed through an incision in the tummy. The abdominal contents lay inside a large sack (peritoneum) that can be retracted (moved to the side), allowing the surgeon access to the front of the spine without entering the abdomen. The large vessels (aorta, common iliac artery and vena cava) that lie over the front of the spine are carefully moved aside. Sometimes surgery is performed in conjunction with a vascular surgeon, who will mobilise the blood vessels if there are any concerns or difficulty with this.

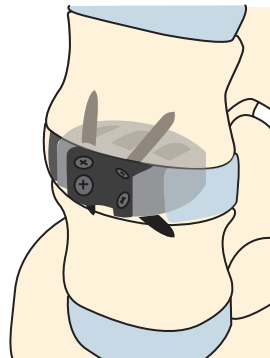
After the blood vessels have been moved aside, a 'window' is cut in the anterior ligament and fibrous wall of the disc (annulus fibrosus). The disc material (nucleus pulposus) is then removed and the cage, containing bone graft, is placed in the space created. Some cages require placement of screws or blades into the vertebral body above and below them. Your own bone will, over time, grow into the bone graft.

This approach to the spine has risks and complications which are specific to it and are listed below the general ones (see 'Risks and complications').

Diagram of cage placement



Cage in situ



X-rays showing ALIF cage in place, side and front views



Risks and complications

- **Problems with positioning during the operation** which might include skin injuries or pressure problems. Special gel mattresses and heel protection are used to minimise this.
- **Infection.** Superficial wound infections may occur in up to 4 out of 100 cases. These are often easily treated with a course of antibiotics. Deep wound infections may occur in fewer than 1 out of 100 cases. These can be more difficult to treat with antibiotics alone and sometimes patients require more surgery to clean out the infected tissue. This risk may increase for people who have diabetes, impaired immune systems or are taking steroids.
- **Blood clots (thromboses) in the deep veins of the legs (DVT) or lungs (PE).** These occur when the blood in the large veins of the leg forms blood clots which may cause the leg to swell and become painful and warm to the touch. Although rare, if not treated this could be a fatal condition if the blood clot travels from the leg to the lungs, cutting off the blood supply to a portion of the lung. It is reported as happening in fewer than 1 out of 700 cases. There are many ways to reduce the risk of a blood clot forming. The most effective is to get moving as soon as possible after your operation. Walk regularly as soon as you can, both in hospital and when you return home.

Perform the leg exercises as shown to you by the physiotherapist and keep well hydrated by drinking plenty of water. Women are also advised to stop taking any medication which contains the hormone oestrogen (like the combined contraceptive or HRT) four weeks before surgery, as taking this during spinal surgery can increase the chances of developing a blood clot.

- **Bleeding.** Surgeons try to minimise bleeding by using devices like diathermy, a technique which passes an electrical current into the wound to cause bleeding vessels to clot. You **must** however, inform your consultant if you are taking tablets used to 'thin the blood', such as warfarin, aspirin, rivaroxaban or clopidogrel. It is likely you will need to stop taking them before your operation as they increase the risk of bleeding. Taking medication like non-steroidal anti-inflammatories (NSAIDs) could also increase your risk of bleeding and your surgeon will advise you if you need to stop taking these in advance of your operation. If your operation is scheduled with only a week's notice, please check with your consultant or nurse what drugs need to be stopped to prevent your surgery being delayed.
- **Bone graft non-union or lack of solid fusion (pseudoarthrosis).** This can occur in up to 5 out of 100 cases. See page 11 for factors which can affect fusion.
- **Cage / Implant movement** can occur in up to 2 out of 100 cases, with 1 out of 100 requiring re-operation. In extremely rare cases, cage movement can cause severe damage and cauda equina syndrome or spinal cord damage (paralysis, bladder or bowel incontinence).
- Although rare, the **surgery may make your symptoms worse than before.**
- **Ongoing pain.** Fusion surgery is a complex procedure and not all patients get pain relief.

There are also very rare but serious complications that in extreme circumstances might include:

- **damage to the spinal cord or cauda equina** resulting in paralysis (the loss of use of the legs, loss of sensation and loss of control of the bladder and bowel). This can occur through bleeding into the spinal canal after surgery (a haematoma). If an event of this nature were to occur, every effort would be made to reverse the situation by returning to theatre to wash out the haematoma. Sometimes, however, paralysis can occur as a result of damage or reduction of the blood supply to the nerves or spinal cord and this is, unfortunately, not reversible;
- **a stroke, heart attack or other medical or anaesthetic problems;**
- and extremely rarely, **death**; as a result of damage to major blood vessels or vital organs at the front of the spine, which is reported as happening in 1 out of 10,000 cases;
- **general anaesthetic fatal complications** which have been reported in 1 out of 250,000 cases.

ALIF specific risks and complications

- **Damage to the large blood vessels** which may result in excessive blood loss. This is reported as happening in up to 15 out of 100 cases, although it is less common in the hands of an experienced spinal or vascular surgeon. Usually small tears in the vessels can be controlled reasonably simply, though there remains the very small risk of catastrophic bleeding that could, in extremely rare circumstances, lead to death.
- **Sympathetic nerve damage.** There are small nerves directly over the disc space which can be damaged during surgery. These nerves are responsible for many involuntary organ functions, including the heart rate, peristalsis (gut movement), kidney function and, in men, the ability to ejaculate. If these nerves are damaged it can cause problems including:
 - **retrograde ejaculation (men only).** This is a condition where the valve that causes the ejaculate to be expelled outward

during intercourse does not work and the ejaculate takes the path of least resistance, which is up into the bladder. The sensation remains largely the same and this condition does not cause impotence (the ability to have an erection) but it can unfortunately make conception very difficult. This is reported in fewer than 1 in 100 cases and can resolve over time (a few months to a year);

- **warm leg.** This sensation is felt in just one leg, the same side as the surgery has been performed. This can resolve over time but may be a permanent sensation;
- **paralytic ileus.** This is a condition where there is an interruption of the normal bowel contraction and the bowel temporarily 'goes to sleep'. It can be a common side effect of abdominal surgery or nerve damage in this type of surgery. Symptoms include constipation and bloating and occasionally vomiting. Diagnosis can be confirmed by a doctor listening to the abdomen with a stethoscope and hearing no bowel sounds. Food should be avoided until sounds are heard and flatus (gas) passed again. This condition can occur in 11 out of 100 cases.

Factors which may affect spinal fusion and your recovery

There are several factors that can negatively impact on a solid fusion following surgery, including:

- smoking
- diabetes or chronic illness
- obesity
- malnutrition
- osteoporosis
- post-surgery activities (see note on recreational activities)
- long-term (chronic) steroid use.

Of all these factors, the one that can compromise fusion rate the most is smoking. Nicotine has been shown to be a bone toxin which inhibits the ability of the bone-growing cells in the body (osteoblasts) to grow bone. Patients should make a concerted effort to allow their body the best chance for their bone to heal by not smoking, ideally 2–3 months before the operation. Your surgery may be delayed if you have not stopped smoking (or taking nicotine in another form) beforehand.

What to expect after surgery and going home

Immediately after the operation you will be taken on your bed to the recovery ward where nurses will regularly monitor your blood pressure and pulse. Oxygen will be given to you through a facemask for a short period to help you recover from the anaesthetic. You will have an intravenous drip until you can drink adequately.

A drain (tube) may be placed near the surgical incision if there has been significant bleeding during the operation. This removes any excess blood or fluid collecting under the wound. The drain will be removed when the drainage has stopped, usually the next day after surgery.

It is very normal to experience some level of discomfort or pain after the surgery. The nursing and medical staff will help you to control this with appropriate medication. The pain should settle but can take eight weeks, or longer. It is important not to suddenly stop taking certain pain relief medication such as morphine, or neuropathic medication (gabapentin, pregabalin or amitriptyline). It will be necessary to gradually 'wean' yourself off these medications – your GP can advise you if necessary.

The ward physiotherapist will visit you after the operation to teach you exercises and help you out of bed. They will show you the correct way to move safely. Once you are confident and independently mobile, you will be encouraged to practise climbing stairs with the physiotherapist. Once stable, you will be allowed

home, usually 1–2 days after surgery.

Please arrange for a friend or relative to collect you, as driving yourself or taking public transport is not advised in the initial stages of recovery. If you qualify for patient transport and are likely to require this service, please let one of the nurses know as soon as you can as this may need to be pre-arranged. Your discharge home could be delayed if not.

Wound care

Skin wound closure depends on your surgeon's preference and includes absorbable sutures (stitches), removable sutures or clips (surgical staples). Most surgeons will use absorbable sutures for ALIF surgery.

If you have removable sutures or clips, you will be advised by the ward nurse to arrange an appointment with your GP's practice nurse after the operation, for them to be removed.

If you have absorbable sutures, you will be advised by the ward nurse whether you need to make an appointment with your GP's practice nurse to have a wound check or when you can take off the dressing yourself.

You may shower 48 hours after surgery if you are careful but you must avoid the dressing getting too wet. Most dressings used are 'splash proof' but if water gets underneath it will need to be changed. A simple dry dressing from a pharmacy is sufficient to use. Bathing should be avoided for two weeks.

Please contact your hospital or your GP if you think your wound might be infected. Symptoms could include:

- redness around the wound
- wound leakage or
- you have a high temperature.

Once the wound has been checked and if the scar is sensitive to touch, you can start to massage around the scar using a non-perfumed cream or oil to encourage normal sensation and healing.

Driving

Normally you will be advised to avoid driving for at least 4 weeks depending on your recovery. If you have no altered sensation or weakness in your legs at that point, then you may resume driving if you feel safe to do so but you must be confident to do an emergency stop. It is advisable not to travel for long distances initially (no longer than 20 minutes) without taking a break to 'stretch your legs'. Gradually increase your sitting tolerance over 4–8 weeks.

Recreational activities

It is important to keep mobile after surgery. You will find you get stiff if sitting for longer than about 20 minutes, so get up and walk about regularly. Walking outside is fine but again, increase your walking distances gradually. Walking will promote healthy circulation and aids the healing process. You will be advised to avoid lifting anything heavy, certainly for the first few weeks but maybe as long as three months after your operation.

Please check with your consultant and physiotherapist when you can resume specific activities, such as swimming or golf, as the advice could range from between six weeks to three months. A graduated return to sport is then advisable. Your surgeon may advise you to avoid flying for six weeks (and long-haul flights for up to three months), because of the increased risk of deep vein thrombosis after surgery.

Work

Returning to work is dependent on both your recovery and your job. Most people are off work for an initial four weeks but if you are in a strenuous job you may need up to eight weeks. It is always sensible to discuss with your work if you can return on 'light duties' and reduced hours at first. There will be nothing to stop you doing computer/office work at an earlier date provided you can keep moving about. The hospital will issue you with a fitness to work (off work) certificate or you may ask your GP.

Follow-up

Your surgeon will advise you when you should attend clinic after your operation. If you have any queries before this appointment please contact the nurse specialist or other member of your consultant's team.



What is the British Spine Registry (BSR)?

The British Spine Registry aims to collect information about spinal surgery across the UK. This will help us to find out which spinal operations are the most effective and in which patients they work best. This should improve patient care in the future.

The Registry will enable patient outcomes to be assessed using questionnaires. These will allow surgeons to see how much improvement there has been from treatment.

This has worked for hip and knee joint replacements through the National Joint Registry. We need your help to improve spinal surgery in the UK.

What data is collected?

Your personal details allow the BSR to link you to the surgery you have had. They also allow us to link together all the questionnaires you complete. If you need any further spinal surgery in the future, details of previous operations will be available to your surgeon.

Personal details needed by the BSR are your name, gender, date of birth, address, email address and NHS number.

Your personal details are treated as confidential at all times and will be kept secure. This data is controlled by the British Association of Spine Surgeons (BASS) and held outside the NHS. Personal details will be removed before any data analysis is performed, retaining only age and gender. Your personal data and email address will not be available to anyone outside BASS and its secure IT provider. Anonymised data may be released to approved

organisations for approved purposes, but a signed agreement will restrict what they can do with the data so patient confidentiality is protected.

Your personal data is very important, as this will allow us to link details of your diagnosis and surgery with any problems or complications after surgery. You may also be asked to complete questionnaires before and after surgery to work out how successful the surgery has been. This will only be possible if we can connect you to the questionnaires through your personal details.

Do I have to give consent?

No, your participation in the BSR is voluntary and whether you consent or not, your medical care will be the same. Your personal details cannot be kept without your consent. This will be obtained either by asking you to physically sign a consent form or electronically sign one through an email link to a questionnaire or at a questionnaire kiosk in the outpatient clinic.

You can withdraw your consent at any time or request access to your data by:

- going to the patient section of the BSR website at www.britishspineregistry.com; or
- writing to us at the BSR centre (see address on next page). Please state if you are happy for us to keep existing data but do not want to be contacted, or whether you want your data to be anonymised (so it cannot be identified).

Research

Your consent will allow the BSR to examine details of your diagnosis, surgical procedure, any complications, your outcome after surgery and your questionnaires. These are known as 'service evaluations' or 'audits'.

Operation and patient information, including questionnaires in the BSR, may be used for medical research. The purpose of this research

is to improve our understanding and treatment of spinal problems. The majority of our research uses only anonymised information which means it is impossible to identify individuals. From time to time, researchers may wish to gather additional information. In these cases we would seek your approval before disclosing your contact details. You do not have to take part in any research study you are invited to take part in and saying no does not affect the care you receive.

All studies using data from the Registry will be recorded on the BSR website at www.britishspineregistry.com

Children

Parents are asked to consent for data to be collected from their child. Looking at the outcome of spinal surgical procedures is just as vital in children as it is in adults.

Further information

The BSR website at www.britishspineregistry.com contains more information, including details of any studies and any information obtained through the Registry data.

To contact the BSR, write to:

The British Spine Registry
Amplitude Clinical Services
2nd Floor
Orchard House
Victoria Square
Droitwich
Worcestershire
WR9 8QT

Produced, researched and revised by spinal nurse specialist Helen Vernau on behalf of the BASS Consent and Patient Information Committee.

Designed and illustrated by
Design Services at East Suffolk and North Essex NHS Foundation Trust.

DPS ref: 04850-21(RP) LN: 3637